

KAKU

上海卡固電設有限公司
Shanghai KAKU Electric Equipment Co., Ltd.
地址 / Add: 上海曹楊北路260-19號 (龍陽廣場) 17層 266室 200033
SUI CHAI 1, 2601 Kerry Rd, Shanghai 200033
電話 / Tel: 86-201-6426-0132 8426-0133 6426-0134
傳真 / Fax: 86-201-6426-2044
E-mail: kakush@online.sh.cn

臺灣卡固科技有限公司
Taiwan KAKU Technology Co., Ltd.
地址 / Add: 臺北板橋區板橋路103號7樓
7F No. 103 Xinyi Rd, Banqiao, Taiwan, Xinhai District
電話 / Tel: 886-2-8951-8644
傳真 / Fax: 886-2-8951-8700
E-mail: kakush922@yahoo.com.cn

韓國卡固貿易株式會社 (P) 한국가쿠무역
Korea KAKU Trading Co., Ltd.
서울시 영등포구 가산동 345-9 새마을금회 3608호 (153-700)
Tel: 02-891-0032, 0631-0630
Fax: 02-861-0131
E-mail: koreakaku@naver.com

www.shKAKU.com

卡固電設
KAKU Electric Equipment



全新專利設計
通風過濾網 P3 系列
VENTILATOR FILTER UNIT (P3)



KAKU   **RoHS CE REACH**

P3 Series 全新專利設計

KAKU.



1) 簡便工具，單手即可裝
換濾棉
Cotton replacement by
hand without any tools.



3) 全新封條整合更佳
Integrated PU foaming
process sealing strip
design increase the
sealing effect.



2) 全新開閉設計，便于更換
濾棉
Easy to replace the
cotton with new
opening design.



4) 提供兩年免費更換服務
Free 2 Years
replacement service
after purchasing unit D.C.1, D.2, D.3, D.4, D.5, D.6, D.7, D.8, D.9, D.10, D.11, D.12, D.13, D.14, D.15, D.16, D.17, D.18, D.19, D.20, D.21, D.22, D.23, D.24, D.25, D.26, D.27, D.28, D.29, D.30, D.31, D.32, D.33, D.34, D.35, D.36, D.37, D.38, D.39, D.40, D.41, D.42, D.43, D.44, D.45, D.46, D.47, D.48, D.49, D.50, D.51, D.52, D.53, D.54, D.55, D.56, D.57, D.58, D.59, D.60, D.61, D.62, D.63, D.64, D.65, D.66, D.67, D.68, D.69, D.70, D.71, D.72, D.73, D.74, D.75, D.76, D.77, D.78, D.79, D.80, D.81, D.82, D.83, D.84, D.85, D.86, D.87, D.88, D.89, D.90, D.91, D.92, D.93, D.94, D.95, D.96, D.97, D.98, D.99, D.100, D.101, D.102, D.103, D.104, D.105, D.106, D.107, D.108, D.109, D.110, D.111, D.112, D.113, D.114, D.115, D.116, D.117, D.118, D.119, D.120, D.121, D.122, D.123, D.124, D.125, D.126, D.127, D.128, D.129, D.130, D.131, D.132, D.133, D.134, D.135, D.136, D.137, D.138, D.139, D.140, D.141, D.142, D.143, D.144, D.145, D.146, D.147, D.148, D.149, D.150, D.151, D.152, D.153, D.154, D.155, D.156, D.157, D.158, D.159, D.160, D.161, D.162, D.163, D.164, D.165, D.166, D.167, D.168, D.169, D.170, D.171, D.172, D.173, D.174, D.175, D.176, D.177, D.178, D.179, D.180, D.181, D.182, D.183, D.184, D.185, D.186, D.187, D.188, D.189, D.190, D.191, D.192, D.193, D.194, D.195, D.196, D.197, D.198, D.199, D.200, D.201, D.202, D.203, D.204, D.205, D.206, D.207, D.208, D.209, D.210, D.211, D.212, D.213, D.214, D.215, D.216, D.217, D.218, D.219, D.220, D.221, D.222, D.223, D.224, D.225, D.226, D.227, D.228, D.229, D.230, D.231, D.232, D.233, D.234, D.235, D.236, D.237, D.238, D.239, D.240, D.241, D.242, D.243, D.244, D.245, D.246, D.247, D.248, D.249, D.250, D.251, D.252, D.253, D.254, D.255, D.256, D.257, D.258, D.259, D.260, D.261, D.262, D.263, D.264, D.265, D.266, D.267, D.268, D.269, D.270, D.271, D.272, D.273, D.274, D.275, D.276, D.277, D.278, D.279, D.280, D.281, D.282, D.283, D.284, D.285, D.286, D.287, D.288, D.289, D.290, D.291, D.292, D.293, D.294, D.295, D.296, D.297, D.298, D.299, D.300, D.301, D.302, D.303, D.304, D.305, D.306, D.307, D.308, D.309, D.310, D.311, D.312, D.313, D.314, D.315, D.316, D.317, D.318, D.319, D.320, D.321, D.322, D.323, D.324, D.325, D.326, D.327, D.328, D.329, D.330, D.331, D.332, D.333, D.334, D.335, D.336, D.337, D.338, D.339, D.340, D.341, D.342, D.343, D.344, D.345, D.346, D.347, D.348, D.349, D.350, D.351, D.352, D.353, D.354, D.355, D.356, D.357, D.358, D.359, D.360, D.361, D.362, D.363, D.364, D.365, D.366, D.367, D.368, D.369, D.370, D.371, D.372, D.373, D.374, D.375, D.376, D.377, D.378, D.379, D.380, D.381, D.382, D.383, D.384, D.385, D.386, D.387, D.388, D.389, D.390, D.391, D.392, D.393, D.394, D.395, D.396, D.397, D.398, D.399, D.400, D.401, D.402, D.403, D.404, D.405, D.406, D.407, D.408, D.409, D.410, D.411, D.412, D.413, D.414, D.415, D.416, D.417, D.418, D.419, D.420, D.421, D.422, D.423, D.424, D.425, D.426, D.427, D.428, D.429, D.430, D.431, D.432, D.433, D.434, D.435, D.436, D.437, D.438, D.439, D.440, D.441, D.442, D.443, D.444, D.445, D.446, D.447, D.448, D.449, D.450, D.451, D.452, D.453, D.454, D.455, D.456, D.457, D.458, D.459, D.460, D.461, D.462, D.463, D.464, D.465, D.466, D.467, D.468, D.469, D.470, D.471, D.472, D.473, D.474, D.475, D.476, D.477, D.478, D.479, D.480, D.481, D.482, D.483, D.484, D.485, D.486, D.487, D.488, D.489, D.490, D.491, D.492, D.493, D.494, D.495, D.496, D.497, D.498, D.499, D.500, D.501, D.502, D.503, D.504, D.505, D.506, D.507, D.508, D.509, D.510, D.511, D.512, D.513, D.514, D.515, D.516, D.517, D.518, D.519, D.520, D.521, D.522, D.523, D.524, D.525, D.526, D.527, D.528, D.529, D.530, D.531, D.532, D.533, D.534, D.535, D.536, D.537, D.538, D.539, D.540, D.541, D.542, D.543, D.544, D.545, D.546, D.547, D.548, D.549, D.550, D.551, D.552, D.553, D.554, D.555, D.556, D.557, D.558, D.559, D.560, D.561, D.562, D.563, D.564, D.565, D.566, D.567, D.568, D.569, D.570, D.571, D.572, D.573, D.574, D.575, D.576, D.577, D.578, D.579, D.580, D.581, D.582, D.583, D.584, D.585, D.586, D.587, D.588, D.589, D.590, D.591, D.592, D.593, D.594, D.595, D.596, D.597, D.598, D.599, D.600, D.601, D.602, D.603, D.604, D.605, D.606, D.607, D.608, D.609, D.610, D.611, D.612, D.613, D.614, D.615, D.616, D.617, D.618, D.619, D.620, D.621, D.622, D.623, D.624, D.625, D.626, D.627, D.628, D.629, D.630, D.631, D.632, D.633, D.634, D.635, D.636, D.637, D.638, D.639, D.640, D.641, D.642, D.643, D.644, D.645, D.646, D.647, D.648, D.649, D.650, D.651, D.652, D.653, D.654, D.655, D.656, D.657, D.658, D.659, D.660, D.661, D.662, D.663, D.664, D.665, D.666, D.667, D.668, D.669, D.670, D.671, D.672, D.673, D.674, D.675, D.676, D.677, D.678, D.679, D.680, D.681, D.682, D.683, D.684, D.685, D.686, D.687, D.688, D.689, D.690, D.691, D.692, D.693, D.694, D.695, D.696, D.697, D.698, D.699, D.700, D.701, D.702, D.703, D.704, D.705, D.706, D.707, D.708, D.709, D.710, D.711, D.712, D.713, D.714, D.715, D.716, D.717, D.718, D.719, D.720, D.721, D.722, D.723, D.724, D.725, D.726, D.727, D.728, D.729, D.730, D.731, D.732, D.733, D.734, D.735, D.736, D.737, D.738, D.739, D.740, D.741, D.742, D.743, D.744, D.745, D.746, D.747, D.748, D.749, D.750, D.751, D.752, D.753, D.754, D.755, D.756, D.757, D.758, D.759, D.760, D.761, D.762, D.763, D.764, D.765, D.766, D.767, D.768, D.769, D.770, D.771, D.772, D.773, D.774, D.775, D.776, D.777, D.778, D.779, D.780, D.781, D.782, D.783, D.784, D.785, D.786, D.787, D.788, D.789, D.790, D.791, D.792, D.793, D.794, D.795, D.796, D.797, D.798, D.799, D.800, D.801, D.802, D.803, D.804, D.805, D.806, D.807, D.808, D.809, D.810, D.811, D.812, D.813, D.814, D.815, D.816, D.817, D.818, D.819, D.820, D.821, D.822, D.823, D.824, D.825, D.826, D.827, D.828, D.829, D.830, D.831, D.832, D.833, D.834, D.835, D.836, D.837, D.838, D.839, D.840, D.841, D.842, D.843, D.844, D.845, D.846, D.847, D.848, D.849, D.850, D.851, D.852, D.853, D.854, D.855, D.856, D.857, D.858, D.859, D.860, D.861, D.862, D.863, D.864, D.865, D.866, D.867, D.868, D.869, D.870, D.871, D.872, D.873, D.874, D.875, D.876, D.877, D.878, D.879, D.880, D.881, D.882, D.883, D.884, D.885, D.886, D.887, D.888, D.889, D.890, D.891, D.892, D.893, D.894, D.895, D.896, D.897, D.898, D.899, D.900, D.901, D.902, D.903, D.904, D.905, D.906, D.907, D.908, D.909, D.910, D.911, D.912, D.913, D.914, D.915, D.916, D.917, D.918, D.919, D.920, D.921, D.922, D.923, D.924, D.925, D.926, D.927, D.928, D.929, D.930, D.931, D.932, D.933, D.934, D.935, D.936, D.937, D.938, D.939, D.940, D.941, D.942, D.943, D.944, D.945, D.946, D.947, D.948, D.949, D.950, D.951, D.952, D.953, D.954, D.955, D.956, D.957, D.958, D.959, D.960, D.961, D.962, D.963, D.964, D.965, D.966, D.967, D.968, D.969, D.970, D.971, D.972, D.973, D.974, D.975, D.976, D.977, D.978, D.979, D.980, D.981, D.982, D.983, D.984, D.985, D.986, D.987, D.988, D.989, D.990, D.991, D.992, D.993, D.994, D.995, D.996, D.997, D.998, D.999, D.1000.



材質與認證 Material & Certification description

- 材質: ABS (標準溫度範圍: -10°C~+85°C), PC (標準溫度範圍: -20°C~+120°C) 認證: UL94V-0, IP44, RoHS (Reach 標準版) ABS 及 PC 材質的濾網, 增加了阻燃及抗紫外線特性, 濾網材質選用優質尼龍纖維合成濾網, 除菌率高達AFI 80% (AFI=JAPAN AIRFILTER INSTITUTE), 可反覆拆裝使用。

Material: ABS (scope of temperature: -10°C~+85°C), PC (scope of temperature: -20°C~+120°C) Certification: UL94V-0, IP44, RoHS (Reach is an option). Different good quality material made of non-flammable ABS plus imported nylon fiber synthetic make sure AFI up to 80%.

全新精選設計 Special design

- 全新抽拉式人性化設計, 極大程度上考慮到濾網更換的便捷性, 同時避免了濾網更換過程中可能發生的電氣隱患, 外框採用型設計, 多根橫風機軸配準, 全新開閉設計, 密封條一體成型並達到最佳空氣流量及防塵防水效果。

New withdrawing design, considering the convenience of filter cotton to replace on the great degree, at the same time avoid the electrical hazards may occur in the process of replacement of filter cotton. New designed filter can match multiple fan specification. Integrated forming processing sealing strip design increase the sealing effect.

配置靈活 Flexible assemble

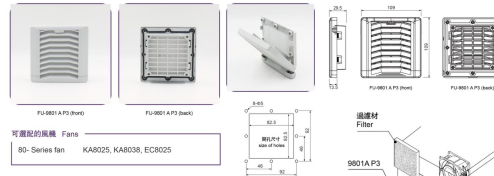
- 全新濾網與風機軸採用全新結構設計, 根據客戶風機要求搭配不同型號風機使用, 使得通風量與能效得以提升, New designed filter continue using classical design which make sure different fan can be assembled on the units which increased the ventilation effect.

使用效能 Efficiency

- 全新開閉式密封條及PC風機, 可有效確保印刷機及精密零件之有效散熱, 延長使用壽命, 降低故障率。 New filter units equipped with EC high efficiency fans can increase the service life of electric components.

卡圖電設 配件世家

FU 9801 P3



可選配的風機 Fans

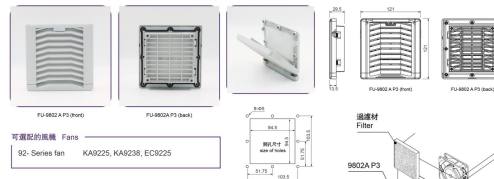
80-Series fan KA8025, KA8038, EC8025

參數表 Specification

型號 Model	包裝量 Package quantity	材質 Material	耐受溫度 Temperature tolerance	保護等級 Protection Grade
FU 9801 A P3	20 PC/Box	ABS ABS	-10~+85°C	IP44

請與貴地區各分公司或代理商: Please contact the local branch or agent for filter cotton replacement.

FU 9802 P3



可選配的風機 Fans

82-Series fan KA8025, KA8038, EC8025

參數表 Specification

型號 Model	包裝量 Package quantity	材質 Material	耐受溫度 Temperature tolerance	保護等級 Protection Grade
FU 9802 A P3	20 PC/Box	ABS ABS	-10~+85°C	IP44

請與貴地區各分公司或代理商: Please contact the local branch or agent for filter cotton replacement.

最新數據請洽, 請與貴區聯繫: Please contact customer service in case any update information!

KAKU. 1
www.shKAKU.com

■ FU 9803 P3




可選配的風機 Fans
120-Series fan KA1225, KA1238, EC1225, EC1238, EC12038

參數表 Specification

型號 Model	包裝數 Package quantity	材質 Material	耐溫溫度 Temperature tolerance	保護等級 Protection Grade
FU 9803 A P3	20 PC/Box	ABS ABS - Nylon PU	-10~+55°C	IP44

請與原廠銷售處或分公司經銷代理商：Please contact the local branch or agent for filter cotton replacement.

■ FU 9805 P3



可選配的風機 Fans
172-Series fan KA1725, KA1705, KA1703, KA1705, KA1725/58
180-Series fan KA1805, EC1805
220-Series fan KA2206, KA2208, EC2206, EC2208
207-Series fan KA2072, EC2072

參數表 Specification

型號 Model	包裝數 Package quantity	材質 Material	耐溫溫度 Temperature tolerance	保護等級 Protection Grade
FU 9805 A P3	20 PC/Box	ABS ABS - Nylon PU	-10~+55°C	IP44

請與原廠銷售處或分公司經銷代理商：Please contact the local branch or agent for filter cotton replacement.

■ FU 9804 P3




可選配的風機 Fans
120-Series fan KA1225, KA1238, EC1225, EC1238, EC12038
150-Series fan KA1525, KA1505, KA1503
172-Series fan KA1725, KA1703, KA1703, KA1725/58
KA1725/58, KA1725/58, EC1725
EC1703, EC1725/58, EC1725/58, EC1725/58

參數表 Specification

型號 Model	包裝數 Package quantity	材質 Material	耐溫溫度 Temperature tolerance	保護等級 Protection Grade
FU 9804 A P3	20 PC/Box	ABS ABS - Nylon PU	-10~+55°C	IP44

請與原廠銷售處或分公司經銷代理商：Please contact the local branch or agent for filter cotton replacement.

■ FU 9806 P3

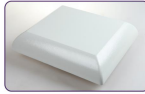


可選配的風機 Fans
180-Series fan KA1806, EC1806
220-Series fan KA2206, KA2208, EC2206, EC2208
280-Series fan KA2809, EC2809
207-Series fan KA2072, EC2072

參數表 Specification

型號 Model	包裝數 Package quantity	材質 Material	耐溫溫度 Temperature tolerance	保護等級 Protection Grade
FU 9806 A P3	20 PC/Box	PC PC - Nylon PU	-10~+65°C	IP44

請與原廠銷售處或分公司經銷代理商：Please contact the local branch or agent for filter cotton replacement.

盤用天井式散熱裝置 Roof Mount Ventilating Filter
RF-190


Top



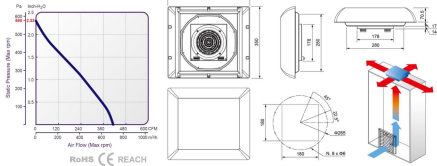
Bottom

Speed-Temperature

參數表 Specification

特性	Features	單位 Unit	RF-EC190
風扇風量	Fan air flow rate	m³/h (CFM)	703 (413)
風扇最低風量	Fan + Down air flow rate	m³/h (CFM)	632 (371)
額定電壓	Rated voltage	V	24VDC 48VDC 110VDC 115VAC 230VAC
額定功率	Power	W	CF 8 35 50 65 80 95
轉速	Rated speed	rpm	CF 1160 2300 2600 2850 3000 3190
外形尺寸	Dimensions H x W x D	mm	400 x 350 x 116
安裝方式	Over current protection	-	50 A/C
電氣連接方式	Electrical connection	-	Terminal
運轉模式	Duty cycle	-	100%
特殊功能 (選配)	Specific function (optional)	-	FG/RD/PM/B-10VDC
工作溫度	Operating temperature	°C	-20~+60
防護等級	Protection grade	-	IP44
噪音量	Noise level	dB(A)	0~79
RF190-dU/LUR806	RF190-dU/LUR806 capacity	m³/h (CFM)	581 (341)
空氣流向	Direction of the air flow	-	Inside → outside
軸承系統	Bearing system	-	ballbearing
警報輸出 (選配)	Alarm output (optional)	-	>60°C 無源觸點 (常開)
材質	Material	-	Al
重量 (淨重/毛重)	Weight (N.W./G.W.)	Kg	4.0 / 4.8
外殼尺寸	Package dimensions HxWxD	mm	459 x 405 x 136
符合標準	Conformity	-	CE
顏色	Colour	-	RAL7035

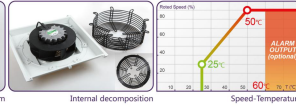
曲線圖 Performance



RoHS CE REACH

盤用天井式散熱裝置 Roof Mount Ventilating Filter
RF-220


Bottom



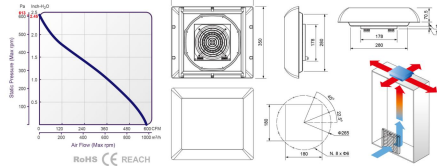
Internal decomposition

Speed-Temperature

參數表 Specification

特性	Features	單位 Unit	RF-EC220
風扇風量	Fan air flow rate	m³/h (CFM)	972 (572)
風扇最低風量	Fan + Down air flow rate	m³/h (CFM)	818 (494)
額定電壓	Rated voltage	V	24VDC 48VDC 110VDC 115VAC 230VAC
額定功率	Power	W	CF 8 40 57 70 88 102
轉速	Rated speed	rpm	CF 1000 2170 2420 2600 2800 2960
外形尺寸	Dimensions H x W x D	mm	400 x 350 x 116
安裝方式	Over current protection	-	50 A/C
電氣連接方式	Electrical connection	-	Terminal
運轉模式	Duty cycle	-	100%
特殊功能 (選配)	Specific function (optional)	-	FG/RD/PM/B-10VDC
工作溫度	Operating temperature	°C	-20~+80
防護等級	Protection grade	-	IP44
噪音量	Noise level	dB(A)	0~79
RF190-dU/LUR806	RF190-dU/LUR806 capacity	m³/h (CFM)	804 (472)
空氣流向	Direction of the air flow	-	Inside → outside
軸承系統	Bearing system	-	ballbearing
警報輸出 (選配)	Alarm output (optional)	-	>60°C 無源觸點 (常開)
材質	Material	-	Al
重量 (淨重/毛重)	Weight (N.W./G.W.)	Kg	4.7 / 5.5
外殼尺寸	Package dimensions HxWxD	mm	459 x 405 x 136
符合標準	Conformity	-	CE
顏色	Colour	-	RAL7035

曲線圖 Performance



RoHS CE REACH

邁進新時代 全新登場
A fresh start on filter family



通風過濾網與風機規格一覽 Specification of the Ventilator Filter Unit & Cooling Fan

型號 Model	外型尺寸 Size mm	有效風量 Air Flow Without Filter	基本風速 Air Speed Max/Mean	除塵率 Dust Resistance Rate, %	壓損範圍 Pressure Loss from/ISO	使用範圍 Usage Area	重量 Weight g	防護等級 Protection Grade
FU 9801 A P2	109*109*29.5	10.0	2.0	80	2.5~20	Indoor-10-55°C	86	IP44
FU 9801 B P2	109*109*44.5	-	1.5	-	-	outdoor-10-55°C	128	IP55
FU 9801 C1 P2	109*109*29.5	-	2.0	-	-	Indoor-10-55°C	86	IP44
FU 9801 C2 P2	109*109*44.5	-	1.5	-	-	outdoor-10-55°C	*128	IP55
FU 9802 A P2	121*121*29.5	16.0	2.0	80	2.5~20	Indoor-10-55°C	103	IP44
FU 9802 B P2	121*121*49.5	-	1.5	-	-	outdoor-10-55°C	156	IP55
FU 9802 C1 P2	121*121*29.5	-	2.0	-	-	Indoor-10-55°C	103	IP44
FU 9802 C2 P2	121*121*49.5	-	1.5	-	-	outdoor-10-55°C	*156	IP55
FU 9803 A P2	148.5*148.5*29.5	25.0	2.0	80	6.7~20	Indoor-10-55°C	130	IP44
FU 9803 B P2	148.5*148.5*79.5	-	1.5	-	-	outdoor-10-55°C	230	IP55
FU 9803 C1 P2	148.5*148.5*29.5	-	2.0	-	-	Indoor-10-55°C	*130	IP44
FU 9803 C2 P2	148.5*148.5*79.5	-	1.5	-	-	outdoor-10-55°C	230	IP55
FU 9803 A M	148.5*148.5*29.5	25.0	2.0	80	6.7~20	Indoor-50-200°C	386	IP44
FU 9803 B M	148.5*148.5*77.5	-	1.5	-	-	outdoor-50-200°C	606	IP55
FU 9803 C1 M	148.5*148.5*29.5	-	2.0	-	-	Indoor-50-200°C	*386	IP44
FU 9803 C2 M	148.5*148.5*77.5	-	1.5	-	-	outdoor-50-200°C	606	IP55
FU 9804 A P2	204*204*29.5	50.0	2.0	80	6.7~20	Indoor-10-55°C	220	IP44
FU 9804 B P2	204*204*97.5	-	1.5	-	-	outdoor-10-55°C	386	IP55
FU 9804 C1 P2	204*204*29.5	-	2.0	-	-	Indoor-10-55°C	291	IP44
FU 9804 C2 P2	204*204*126.5	-	1.5	-	-	outdoor-10-55°C	*467	IP55
FU 9804 A M	204*204*33.5	50.0	2.0	80	6.7~20	Indoor-50-200°C	630	IP44
FU 9804 B M	204*204*101.5	-	1.5	-	-	outdoor-50-200°C	1240	IP55
FU 9804 C1 M	204*204*33.5	-	2.0	-	-	Indoor-50-200°C	*1040	IP44
FU 9804 C2 M	204*204*131.5	-	1.5	-	-	outdoor-50-200°C	*1450	IP55
FU 9805 A P2	255*255*29.5	60.0	2.0	80	6.7~40	Indoor-10-55°C	360	IP44
FU 9805 B P2	255*255*109.5	-	1.5	-	-	outdoor-10-55°C	625	IP55
FU 9805 C1 P2	255*255*29.5	-	2.0	-	-	Indoor-10-55°C	*475	IP44
FU 9805 C2 P2	255*255*139.5	-	1.5	-	-	outdoor-10-55°C	735	IP55
FU 9806 A P2	322*322*29.5	120.0	2.0	80	6.7~40	Indoor-10-55°C	545	IP44
FU 9806 B P2	322*322*109.5	-	1.5	-	-	outdoor-10-55°C	950	IP55
FU 9806 C1 P2	322*322*29.5	-	2.0	-	-	Indoor-10-55°C	709	IP44
FU 9806 C2 P2	322*322*139.5	-	1.5	-	-	outdoor-10-55°C	*1090	IP55

*標註C1與C2重量與尺寸並不包含風扇之重量。 **C1 & C2 weight does not contain the weight of the fans.

通配分機與通風過濾網組合表 Specification of the Fans fit the Ventilator Filter Unit

型號 Model	可選配的風機 FANS		
FU 9801 P3	80-Series fan	KA8025, KA8038, EC8025	
FU 9802 P3	92-Series fan	KA9225, KA9238, EC9225	
FU 9803 P3	120-Series fan	KA1225, KA1238, EC1225, EC1238, EC12038	
FU 9804 P3	120-Series fan	KA1225, KA1238, EC1225, EC1238, EC12038	
	150-Series fan	KA1525, KA15025, KA15023	
FU 9805 P3	172-Series fan	KA1725, KA17025, KA17023, KA1725/5, KA1725/6, KA1725/9C, EC1725, EC17023, EC1725/5, EC1725/6, EC1725/9C	
	172-Series fan	KA1725, KA17025, KA17023, KA1725/5, KA1725/6, KA1725/9C, EC1725, EC17023, EC1725/5, EC1725/6, EC1725/9C	
FU 9806 P3	180-Series fan	KA1806, EC1806	
	220-Series fan	KA2206, KA2208, KA2072, EC2206, EC2208, EC2072	
	180-Series fan	KA1806, EC1806	
	220-Series fan	KA2206, KA2208, EC2206, EC2208	
FU 9800 P3	250-Series fan	KA2509, EC2509	
	207-Series fan	KA2072, EC2072	

風機型號說明 Description of Axial AC Fan Code

